

B L O K

Product Data Sheet

1. PRODUCT NAME

Handrailing system bearing the name BLOK

2. MANUFACTURER

Livers Bronze Co. exclusively manufactures the handrail system as described on this sheet.

Livers Bronze Co.
4621 East 75th Terrace
Kansas City, MO 64132

Phone: (816) 300 2828
Fax: (816) 300 0864
e-mail: livers@liversbronze.com

3. BASIC USE: Livers Bronze BLOK railing system is a pre-engineered component based railing system, shipped to the jobsite ready to install.

LIMITATIONS: BLOK railing system is only limited by the materials from which it is fabricated.

Pre-engineered railing should be assembled using the components listed:

BLOK: 2" x 6" rectangular engineered glass compression blocks @ 2' - 0" O. C. max.

ASSIST RAIL: 1 1/2" round stainless steel, aluminum or bronze. 2" round hardwood (sanded only) also available.

OPTIONAL CAP RAIL: "MN" & 1 1/2" round profiles.

FINISHES: Standard circular grain satin and polished finishes are available for stainless steel & bronze railing. Powder coat finish for steel.

GLASS: 1/2" clear tempered plate glass furnished by Livers Bronze for BLOK railing system.

4. TECHNICAL DATA

The BLOK railing system is designed to meet performance criteria as outlined in IBC 2006.

5. INSTALLATION

Livers Bronze Co. BLOK railing system must be attached to surfaces that are approved or selected by the manufacturer and shall be detailed on all shop drawings.

6. AVAILABILITY AND COST

Cost: Varies according to quantity and material. Further information may be obtained from Livers Bronze Co. or one of their authorized representatives.

Availability: BLOK railing system is subject to current delivery schedules. Each project must be reviewed before scheduling is available.

7. GUARANTEE

Livers Bronze Co. warrants that its BLOK railing system is of sound quality, conforming to standards as stated in part 4 hereof and is reasonably free of defects in material and workmanship. Inasmuch as Livers Bronze has no control over the installation of its products, no other warranty is expressed or implied. Livers Bronze Co. does not warranty against glass breakage.

8. MAINTENANCE

The surface of Livers Bronze Co. material can be kept clean by the use of ordinary soaps and mild cleansers. Abrasive cleaners should not be used.

9. TECHNICAL SERVICES

Technical services are rendered direct from the Livers Bronze Company in Kansas City, Missouri.

10. FILING SYSTEM

Sweet's Architectural file.
Sweets.com

Innovative by Design

AutoCAD details & specifications are available at: www.liversbronze.com

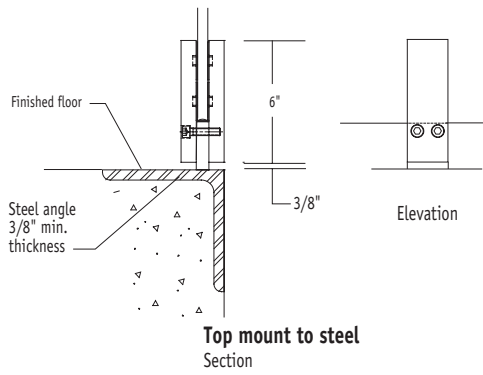
4621 East 75th Terrace
Kansas City, MO 64132

© 2009 Livers Bronze Co.

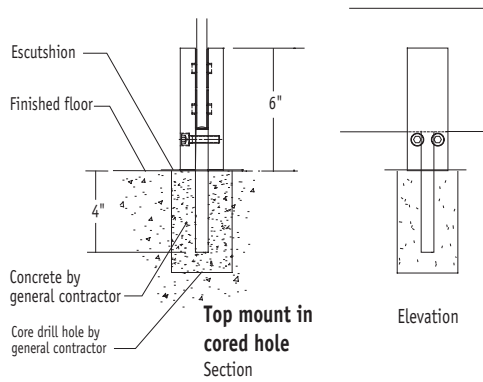
Phone: (816) 300 2828
Fax: (816) 300 0864
e-mail: livers@liversbronze.com



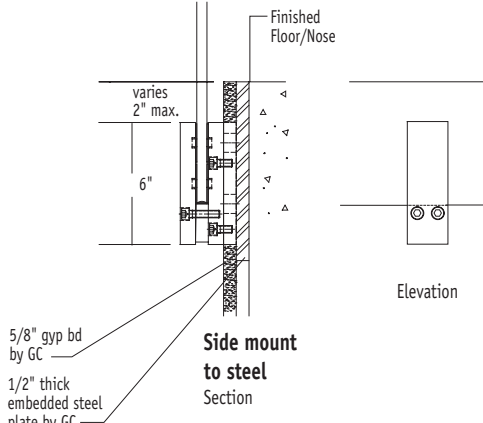
RAILING SYSTEMS



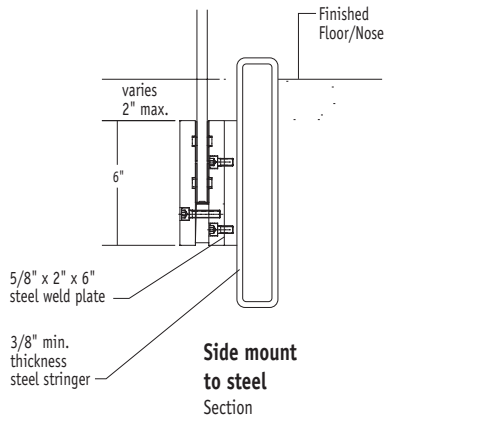
Top mount to steel
Section



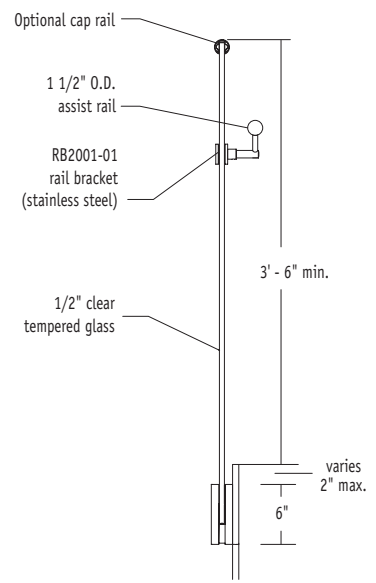
Top mount in cored hole
Section



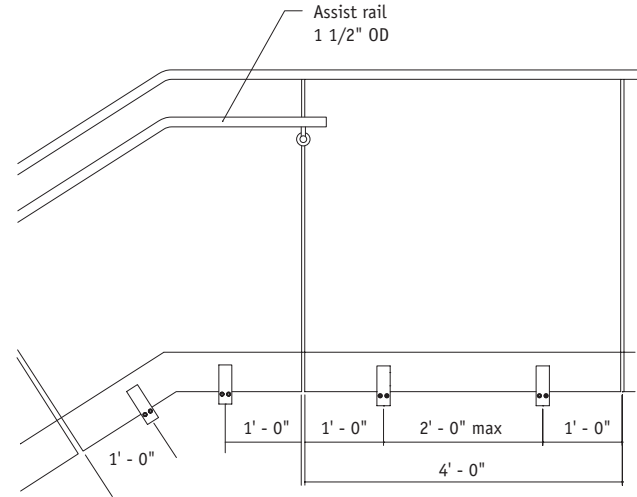
Side mount to steel
Section



Side mount to steel
Section



Assist rail
1 1/2" OD



Typical railing elevation

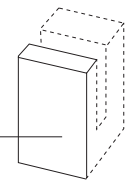


Optional cap rails

Note: If cap rail is used, assist rail is not required except @ stair condition.

Optional trim

Stainless steel, Bronze, Perf. metal & wood



Innovative by Design

AutoCAD details & specifications are available at: www.liversbronze.com

4621 East 75th Terrace
Kansas City, MO 64132

Phone: (816) 300 2828
Fax: (816) 300 0864
e-mail: livers@liversbronze.com

© 2009 Livers Bronze Co.



RAILING SYSTEMS