

# BUTTON

## Product Data Sheet

### 1. PRODUCT NAME

Handrailing system bearing the name BUTTON RAIL

### 2. MANUFACTURER

Livers Bronze Co. exclusively manufactures the handrail system as described on this sheet.

Livers Bronze Co.  
4621 East 75th Terrace  
Kansas City, MO 64132

Phone: (816) 300 2828  
Fax: (816) 300 0864  
e-mail: [livers@liversbronze.com](mailto:livers@liversbronze.com)

3. BASIC USE: Livers Bronze BUTTON RAIL railing system is a pre-engineered component based railing system, shipped to the jobsite ready to install.

LIMITATIONS: BUTTON RAIL railing system is only limited by the materials from which it is fabricated.

Pre-engineered railing should be assembled using the components listed:

BUTTON ASSEMBLY: (2) 2 1/2" Dia. stainless steel button sets mounted to 3" x 9" x 5/8" steel plate. Spacing between button assemblies at 2' - 6" O.C. maximum.

ASSIST RAIL: 1 1/2" round stainless steel, aluminum or bronze. 2" round hardwood (sanded only) also available.

OPTIONAL CAP RAIL: "MN" & 1 1/2" round stainless steel profiles w/ a long grain directional or polished finish.

FINISHES: Standard circular grain satin and polished finishes are available for stainless steel & bronze railing. Powder coat for aluminum. Standard satin finish on Buttons.

GLASS: 1/2" clear tempered plate glass furnished by Livers Bronze for BUTTON RAIL system.

### 4. TECHNICAL DATA

The BUTTON RAIL railing system is designed to meet performance criteria as outlined in IBC 2006.

### 5. INSTALLATION

Livers Bronze Co. BUTTON RAIL railing system must be attached to surfaces that are approved or selected by the manufacturer and shall be detailed on all shop drawings.

### 6. AVAILABILITY AND COST

Cost: Varies according to quantity and material. Further information may be obtained from Livers Bronze Co. or one of their authorized representatives.

Availability: BUTTON RAIL railing system is subject to current delivery schedules. Each project must be reviewed before scheduling is available.

### 7. GUARANTEE

Livers Bronze Co. warrants that its BUTTON RAIL railing system is of sound quality, conforming to standards as stated in part 4 hereof and is reasonably free of defects in material and workmanship. Inasmuch as Livers Bronze has no control over the installation of its products, no other warranty is expressed or implied. Livers Bronze Co. does not warranty against glass breakage.

### 8. MAINTENANCE

The surface of Livers Bronze Co. material can be kept clean by the use of ordinary soaps and mild cleansers. Abrasive cleaners should not be used.

### 9. TECHNICAL SERVICES

Technical services are rendered direct from the Livers Bronze Company in Kansas City, Missouri.

### 10. FILING SYSTEM

Sweet's Architectural file.  
Sweets.com

Innovative by Design

AutoCAD details & specifications are available at:

[www.liversbronze.com](http://www.liversbronze.com)

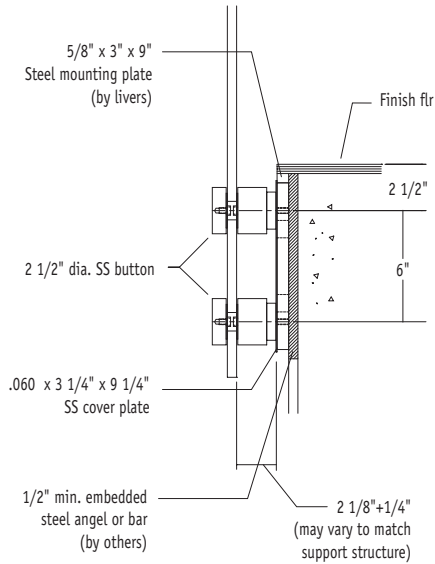
4621 East 75th Terrace  
Kansas City, MO 64132

Phone: (816) 300 2828  
Fax: (816) 300 0864  
e-mail: [livers@liversbronze.com](mailto:livers@liversbronze.com)

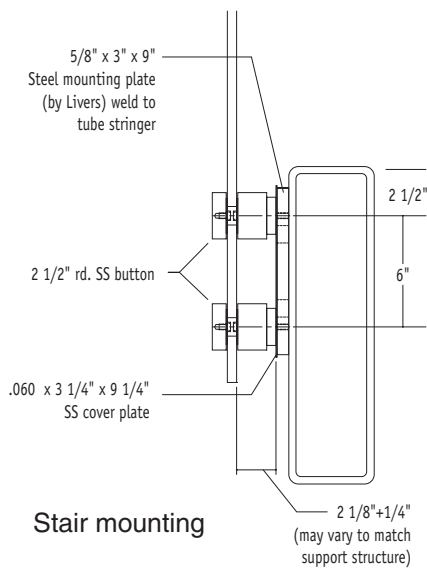
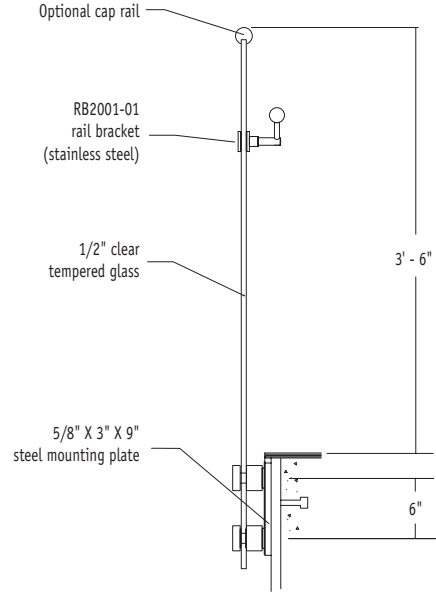
© 2008 Livers Bronze Co.



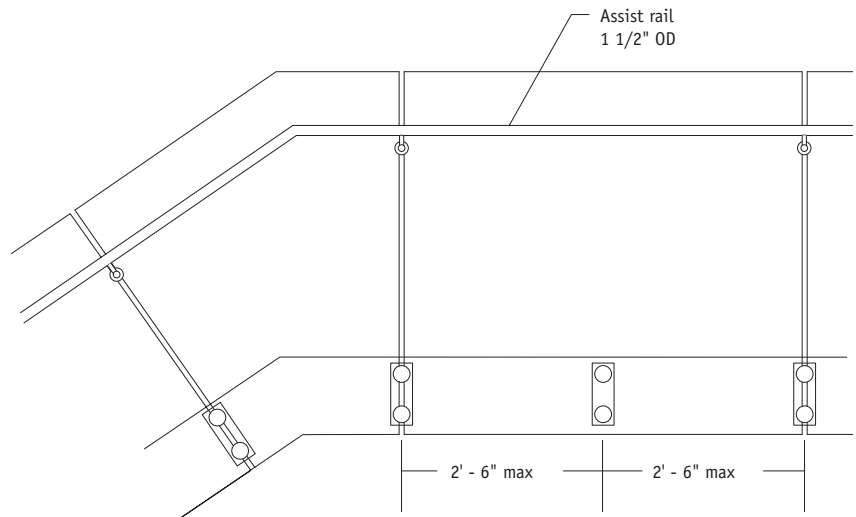
RAILING SYSTEMS



Level mounting



Stair mounting



Typical railing elevation



**OPTIONAL SS CAP RAILS**

Note: If cap rail is used, assist rail is not required except @ stair condition.

Innovative by Design

AutoCAD details & specifications are available at: [www.liversbronze.com](http://www.liversbronze.com)

4621 East 75th Terrace  
Kansas City, MO 64132

Phone: (816) 300 2828  
Fax: (816) 300 0864  
e-mail: [livers@liversbronze.com](mailto:livers@liversbronze.com)



RAILING SYSTEMS