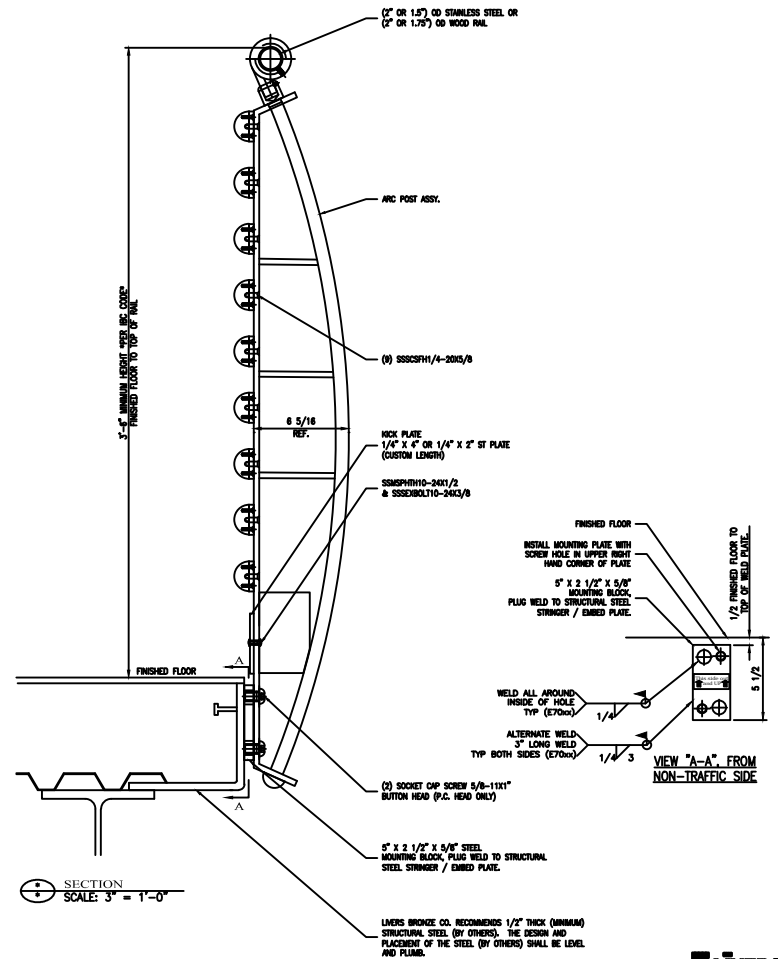
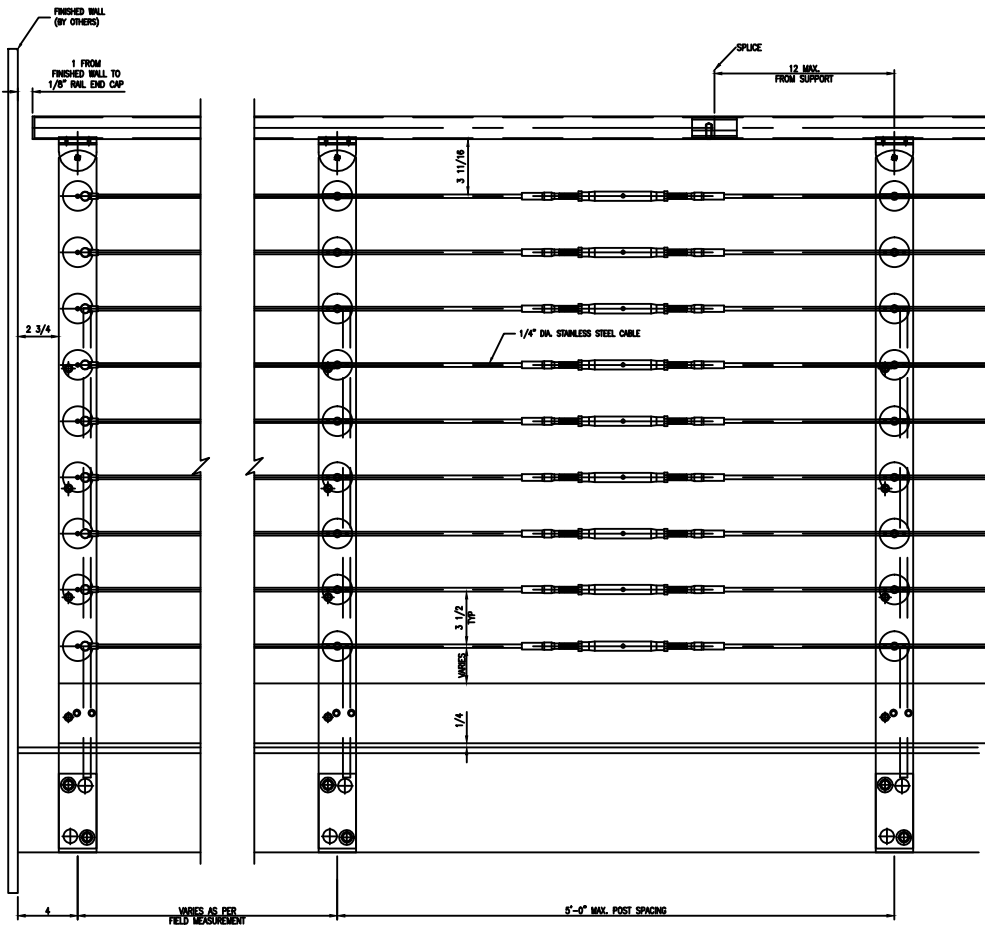
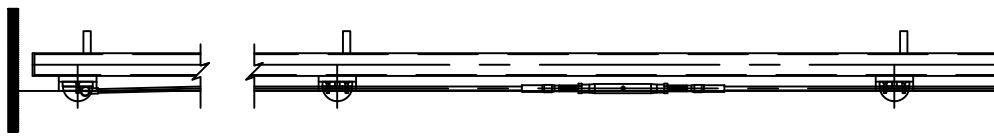


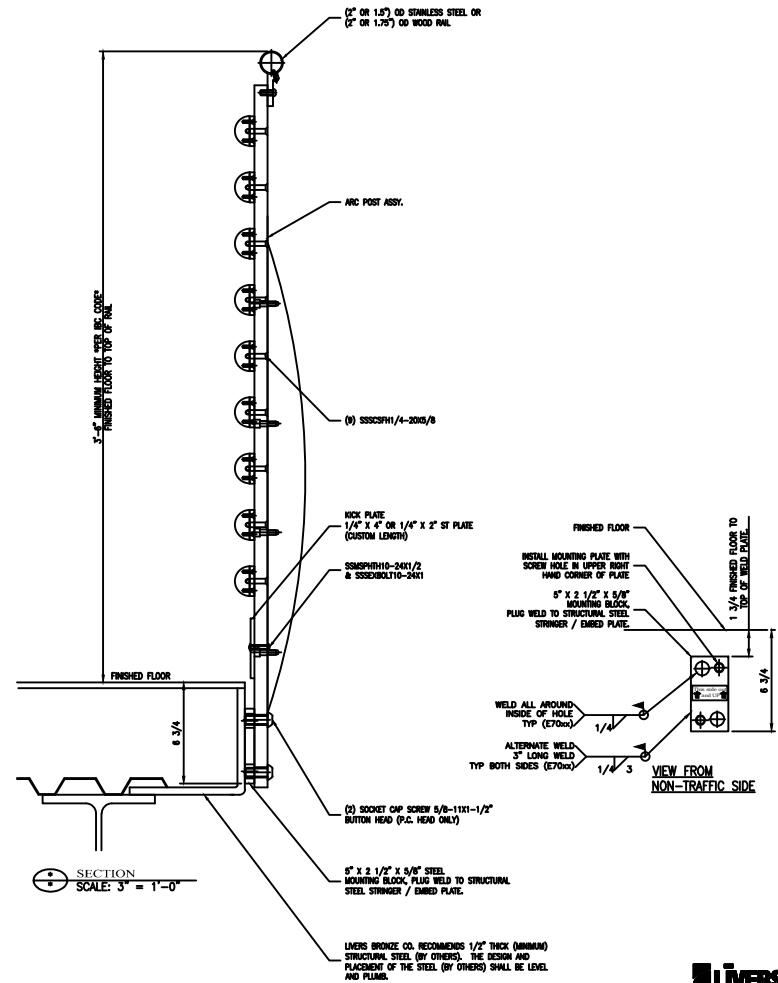
ELEVATION
SCALE: 3" = 1'-0"



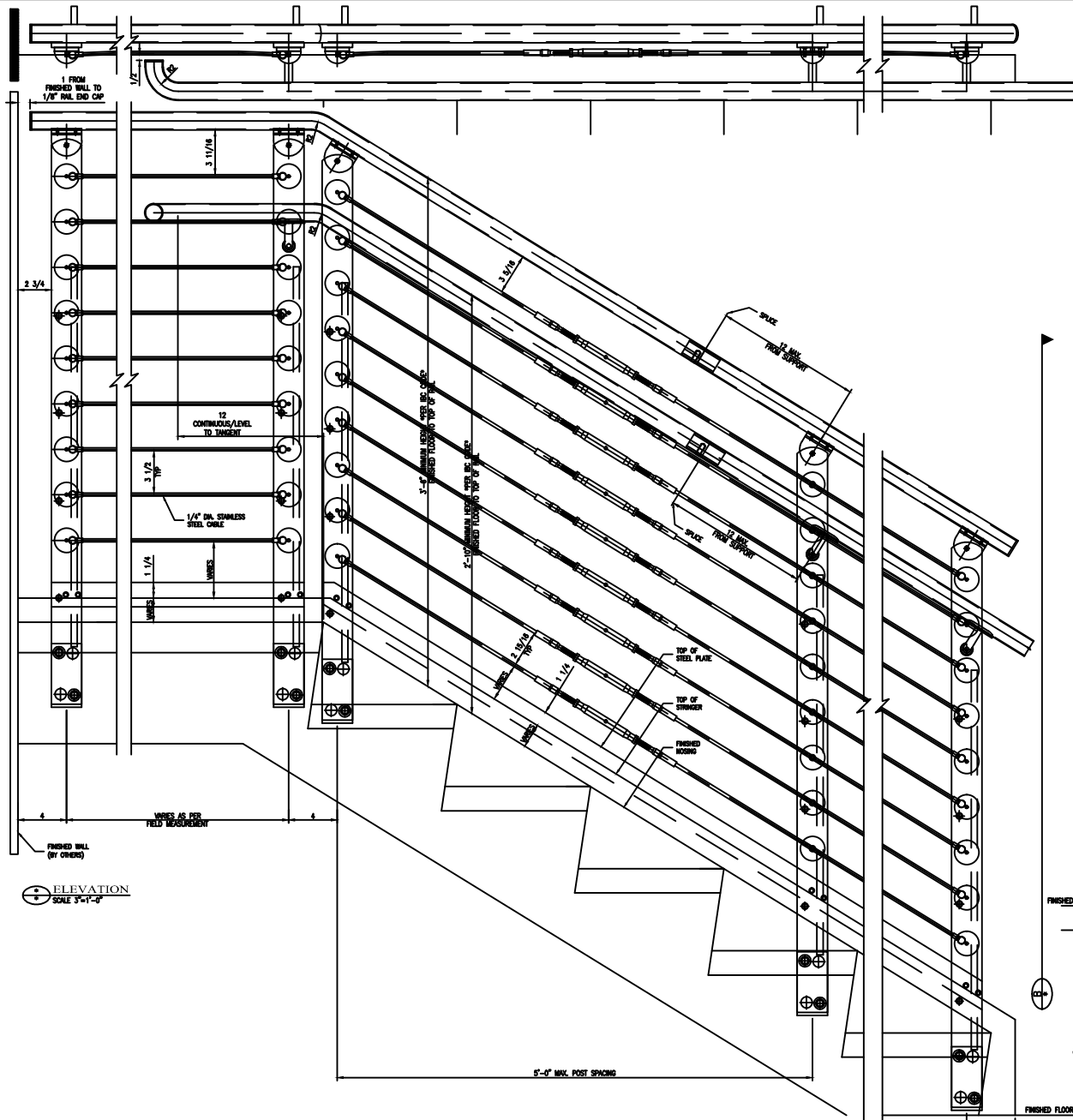
SECTION
SCALE: 3" = 1'-0"



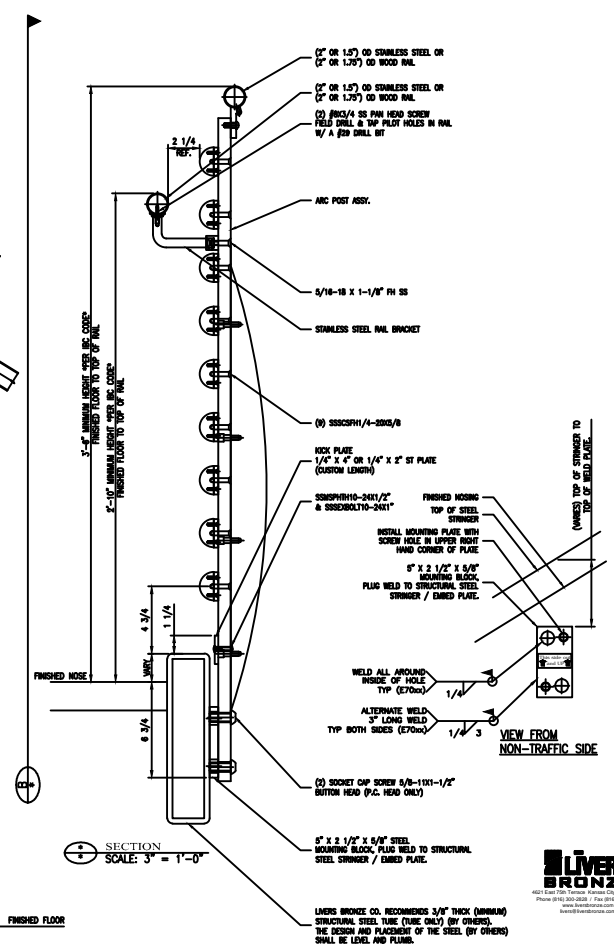
ELEVATION
SCALE: 3/4" = 1'-0"



SECTION
SCALE: 3/4" = 1'-0"



ELEVATION
SCALE: 3" = 1'-0"



SECTION
SCALE: 3" = 1'-0"

- (1) 2" OR 1.5" OD STAINLESS STEEL OR (2" OR 1.75") OD WOOD RAIL
- (2) 2" OR 1.5" OD STAINLESS STEEL OR (2" OR 1.75") OD WOOD RAIL
- (3) 3/8" x 4" SS PAN HEAD SCREW FIELD DRILL & TOP PLATE HOLES IN RAIL 1/4" DIA FOR DRILL BIT

- ARC POST ASSY.
- 5/16-18 X 1-1/8" RH SS
- STAINLESS STEEL RAIL BRACKET

- (4) 30430FH/4-20X3/8
- NOCK PLATE 1/4" X 4" OR 1/4" X 2" ST PLATE (CUSTOM LENGTH)

- 30430FH10-24X1/2" & 30430FH10-24X1"
- FINISHED MIRROR TOP OF STEEL STRINGER
- INSTALL MOUNTING PLATE WITH SCREW HOLE IN UPPER RIGHT HAND CORNER OF PLATE
- 5" X 2 1/2" X 5/8" MOUNTING BLOCK PLUG WELD TO STRUCTURAL STEEL STRINGER / EMBED PLATE

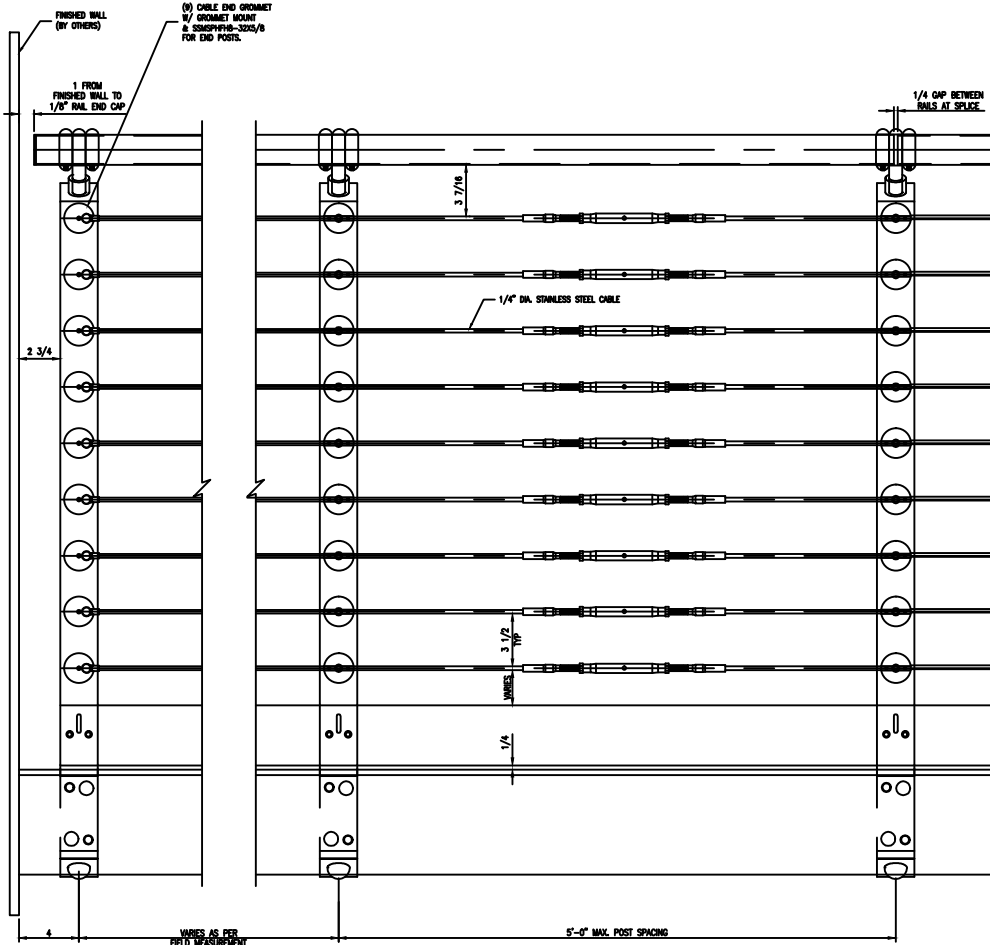
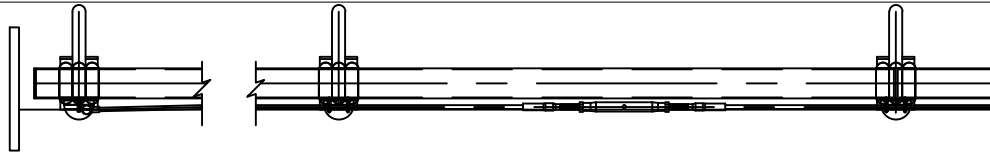
- WELD ALL AROUND INSIDE OF HOLE TYP. (E70xx) 1/4"
- ALTERNATE WELD 3" LONG WELD TYP. BOTH SIDES (E70xx) 1/4" 3

- (5) SOCKET CAP SCREW 5/8-11X1-1/2" BOTTOM HEAD (P.C. HEAD OK)

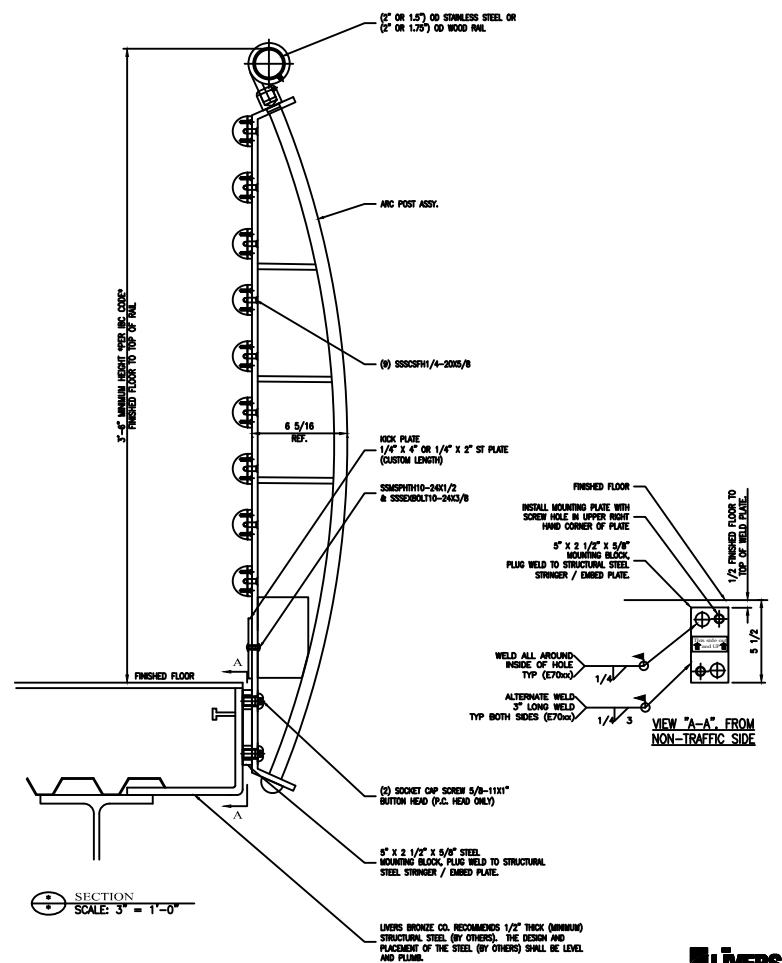
- 5" X 2 1/2" X 5/8" STEEL MOUNTING BLOCK, PLUG WELD TO STRUCTURAL STEEL STRINGER / EMBED PLATE

LIVERS BRONZE CO. RECOMMENDS 3/8" THICK (MINIMUM) STRUCTURAL STEEL TUBE (TUBE ONLY) (BY OTHERS). THE DESIGN AND PLACEMENT OF THE STEEL (BY OTHERS) SHALL BE LEVEL AND PLUMB.

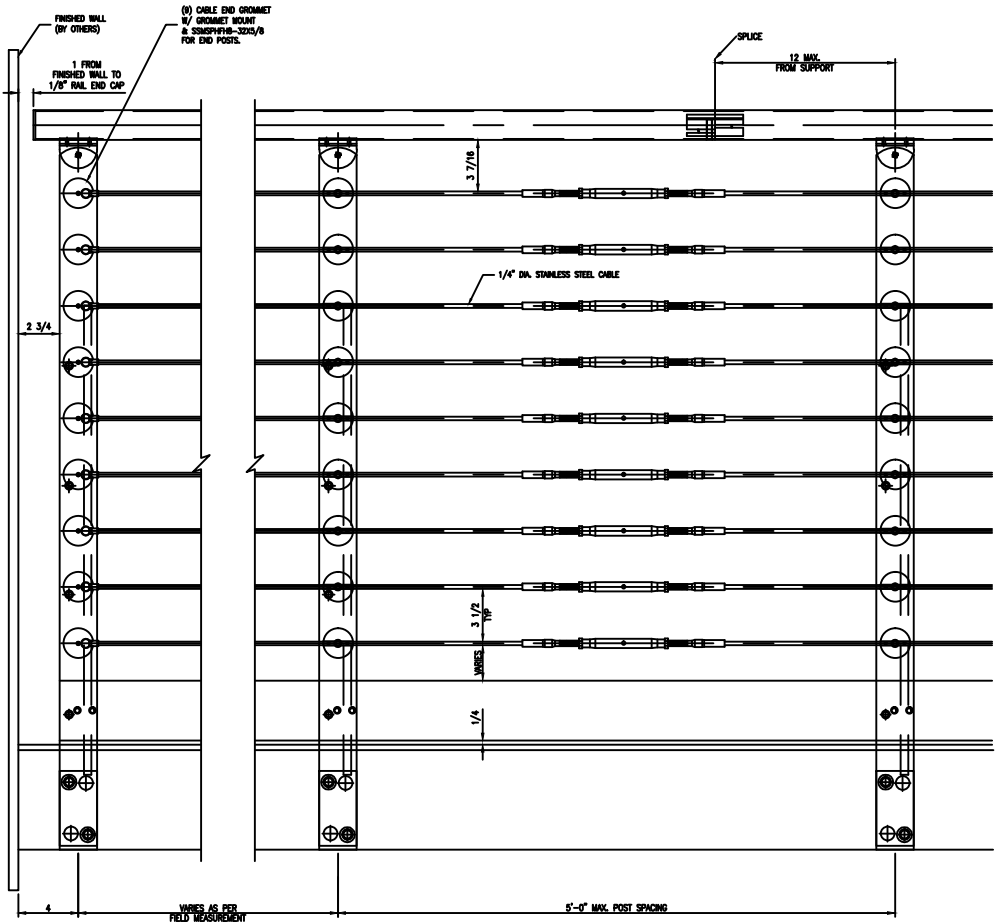




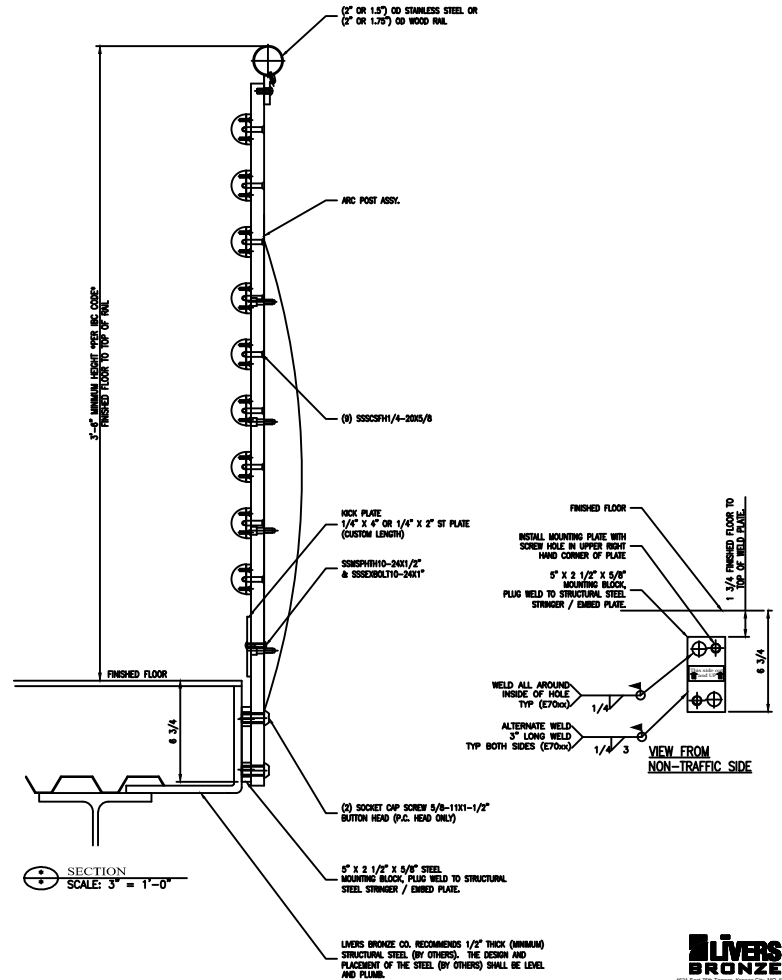
ELEVATION
SCALE: 3/4" = 1'-0"

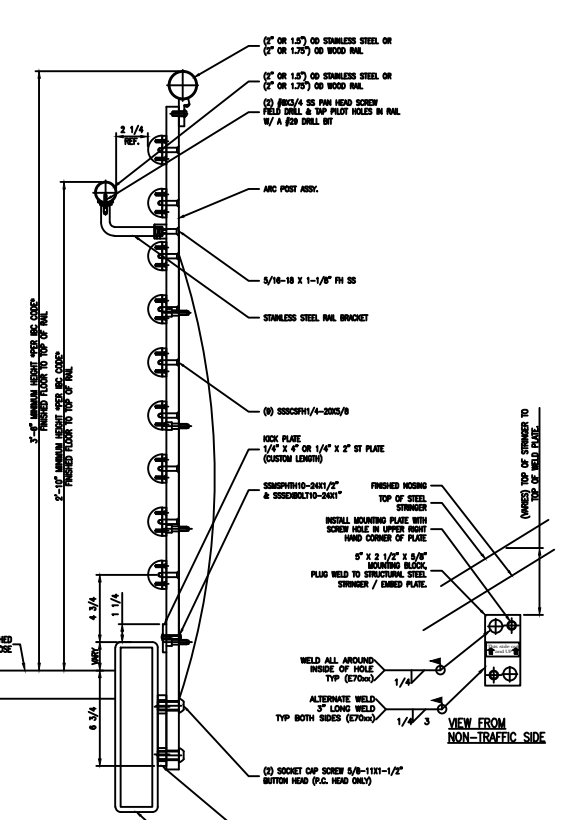
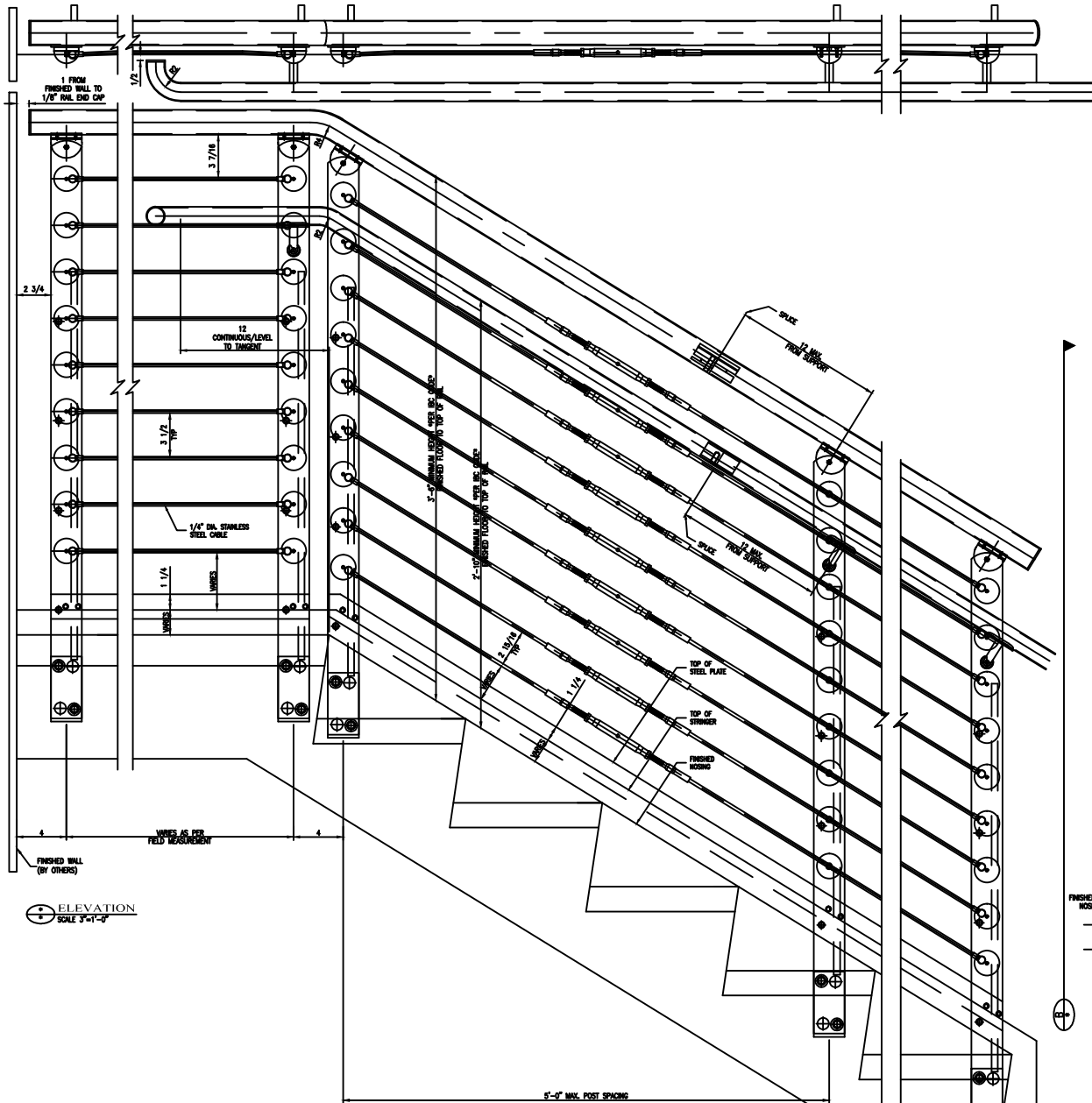


SECTION
SCALE: 3/4" = 1'-0"



ELEVATION
SCALE 3/4" = 1'-0"

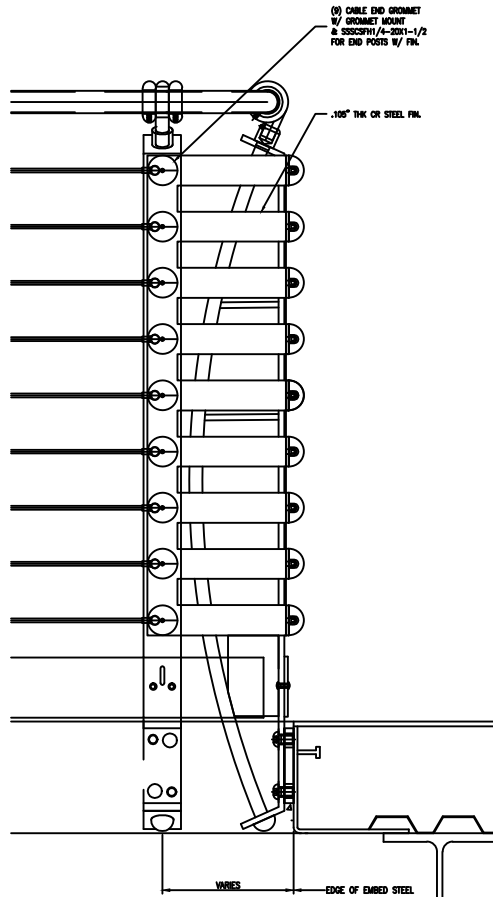
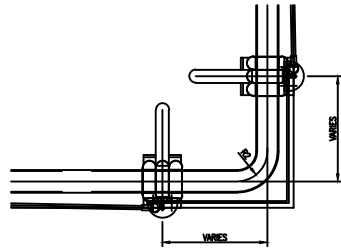




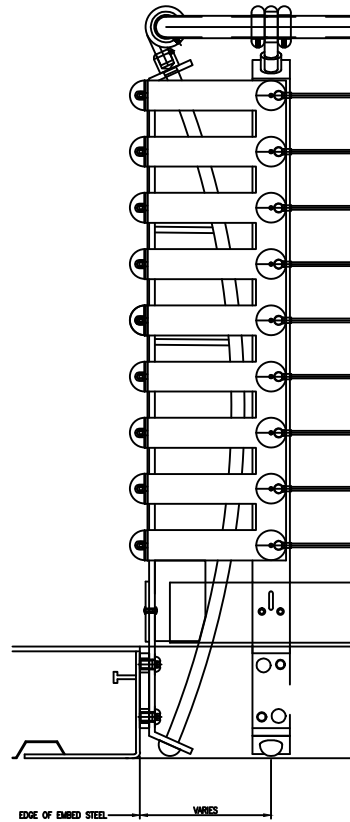
ELEVATION
SCALE: 3/4" = 1'-0"

SECTION
SCALE: 3" = 1'-0"

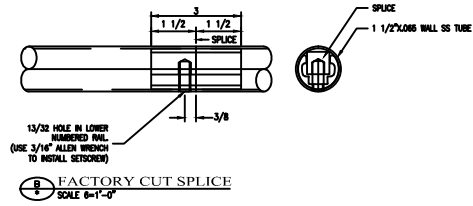




A
ELEVATION
SCALE 3/4"=1'-0"

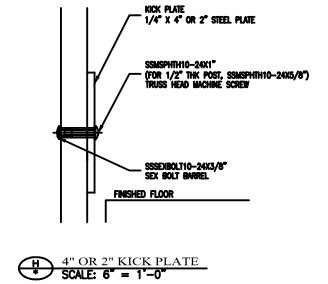
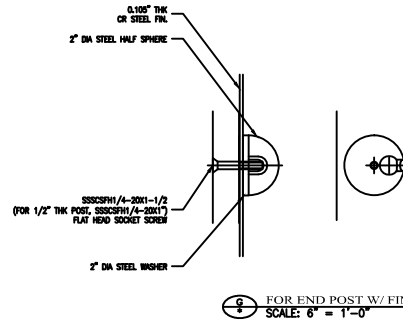
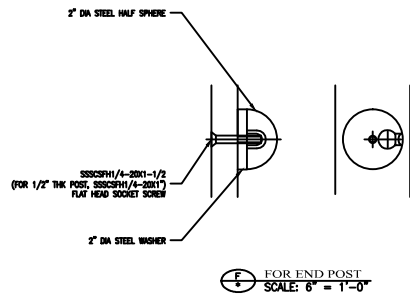
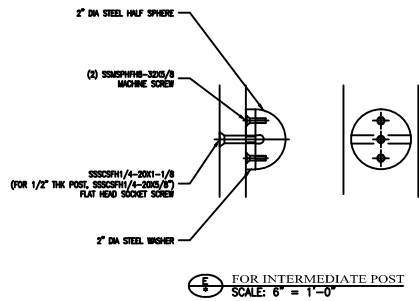
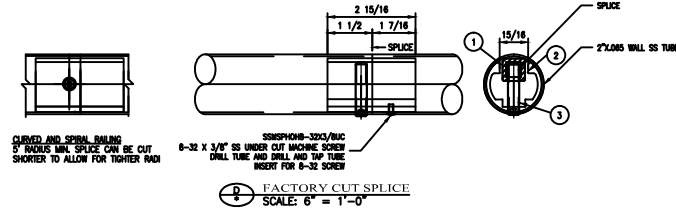


B
SIDE VIEW
SCALE 3/4"=1'-0"



ITEM	QTY	PART NUMBER	DESCRIPTION
3	1		SS SOC SET SCREW 3/8-16 X 1 3/4
2	5		ALUM INSERT, ALUMINUM FOR 200X085
1	25		TUBE, 1.25X3/4 SQ AL 6063

BILL OF MATERIAL



CUSTOM RAIL BRKT DETAIL

