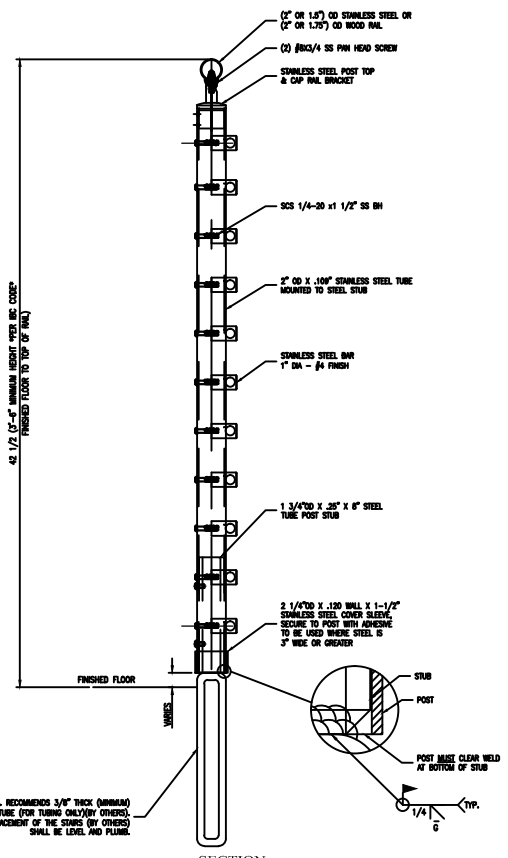
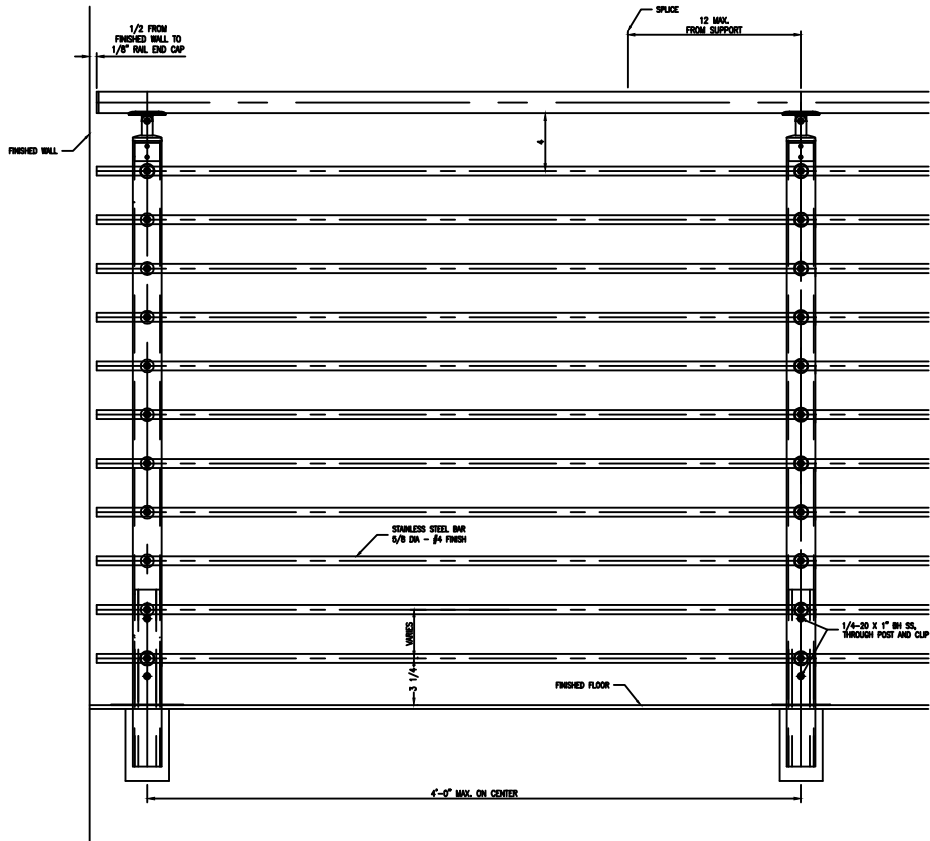
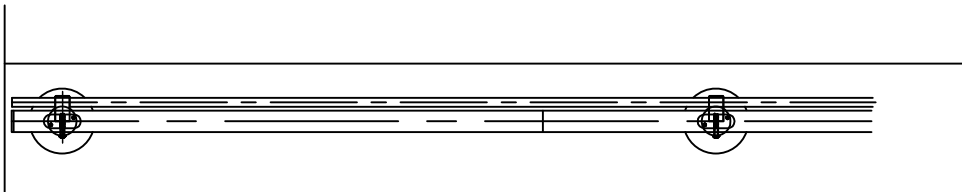


ELEVATION
SCALE 3/4"=1'-0"

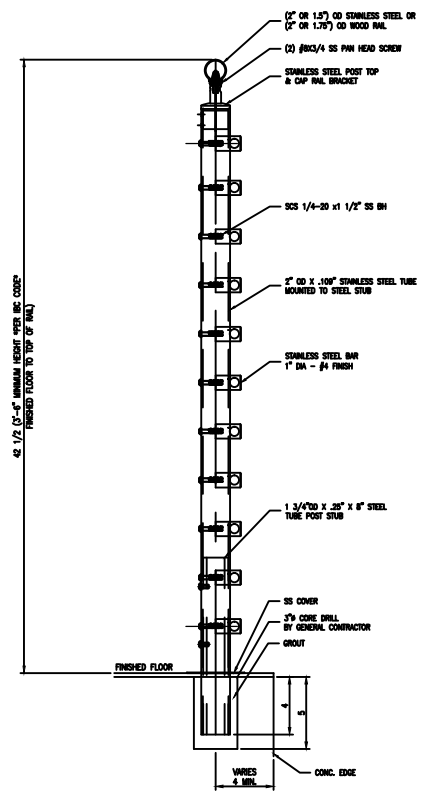


SECTION
SCALE 3/4"=1'-0"

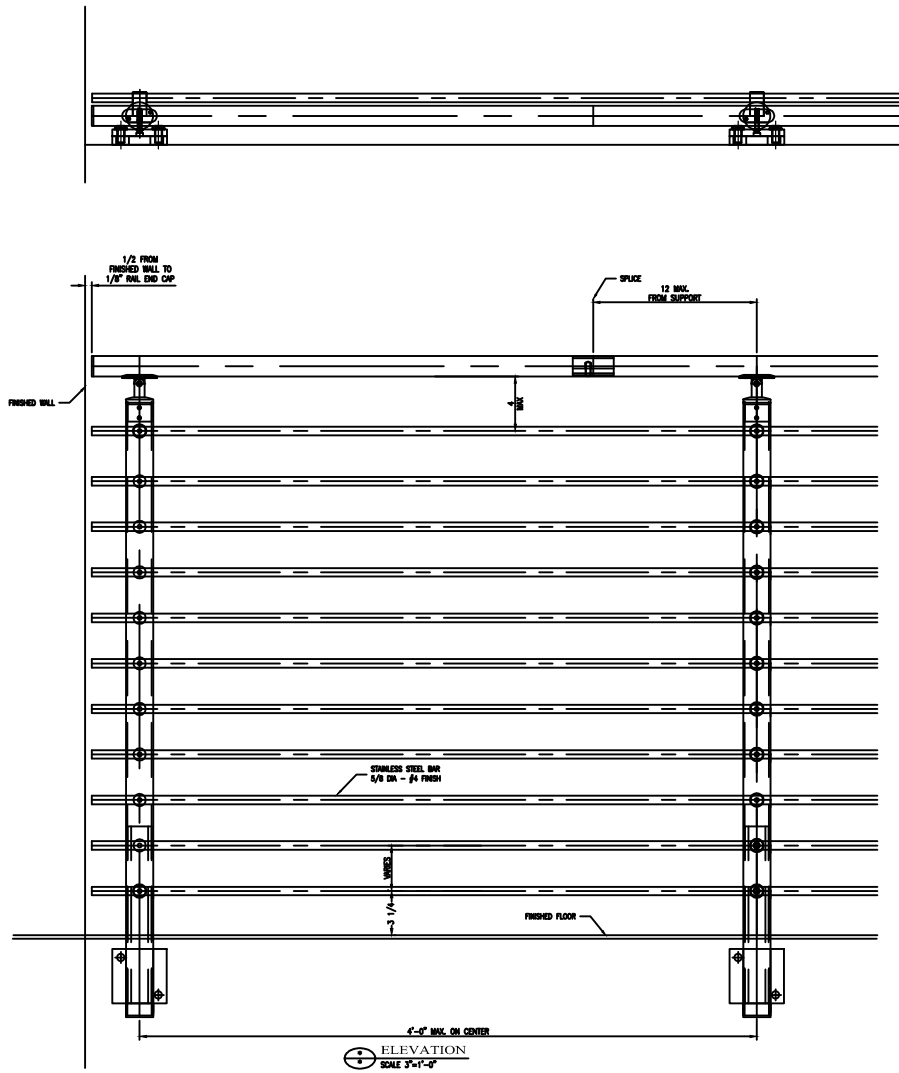
LIVERS BRONZE CO. RECOMMENDS 3/4" THICK (MINIMUM) STRUCTURAL STEEL TUBE (FOR TUBING ONLY/RY OTHERS). THE DESIGN AND PLACEMENT OF THE STUBS (BY OTHERS) SHALL BE LEVEL AND PLUMB.



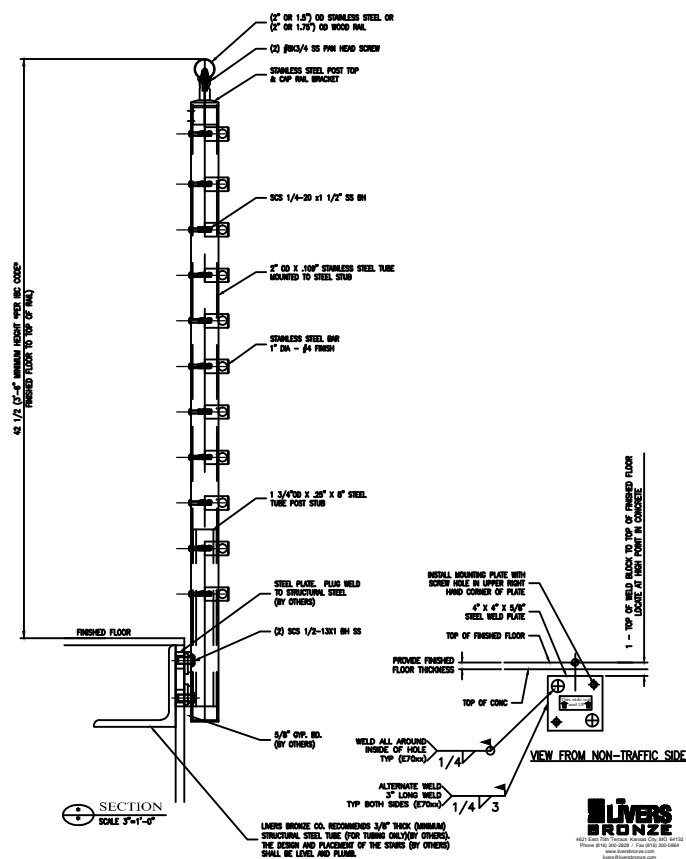
ELEVATION
SCALE 3/4"=1'-0"



SECTION
SCALE 3/4"=1'-0"

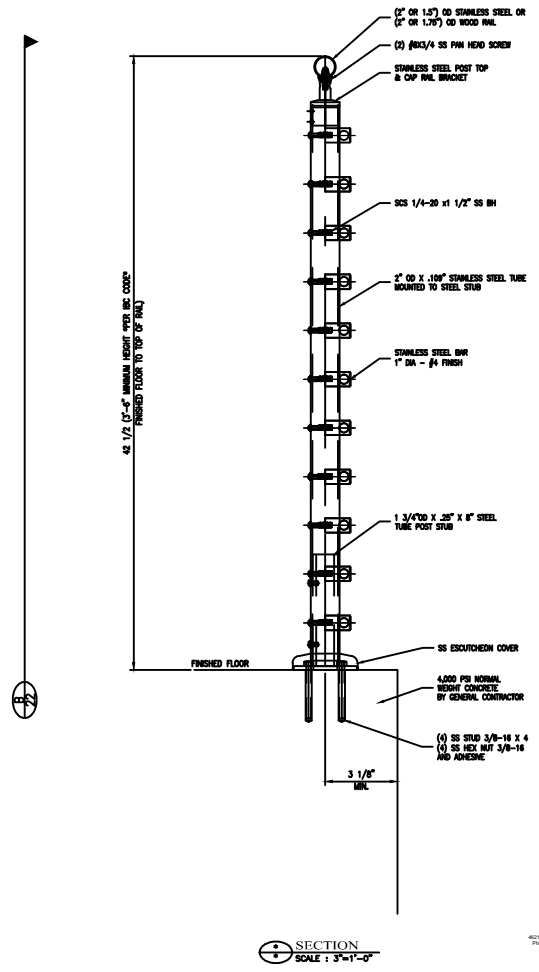
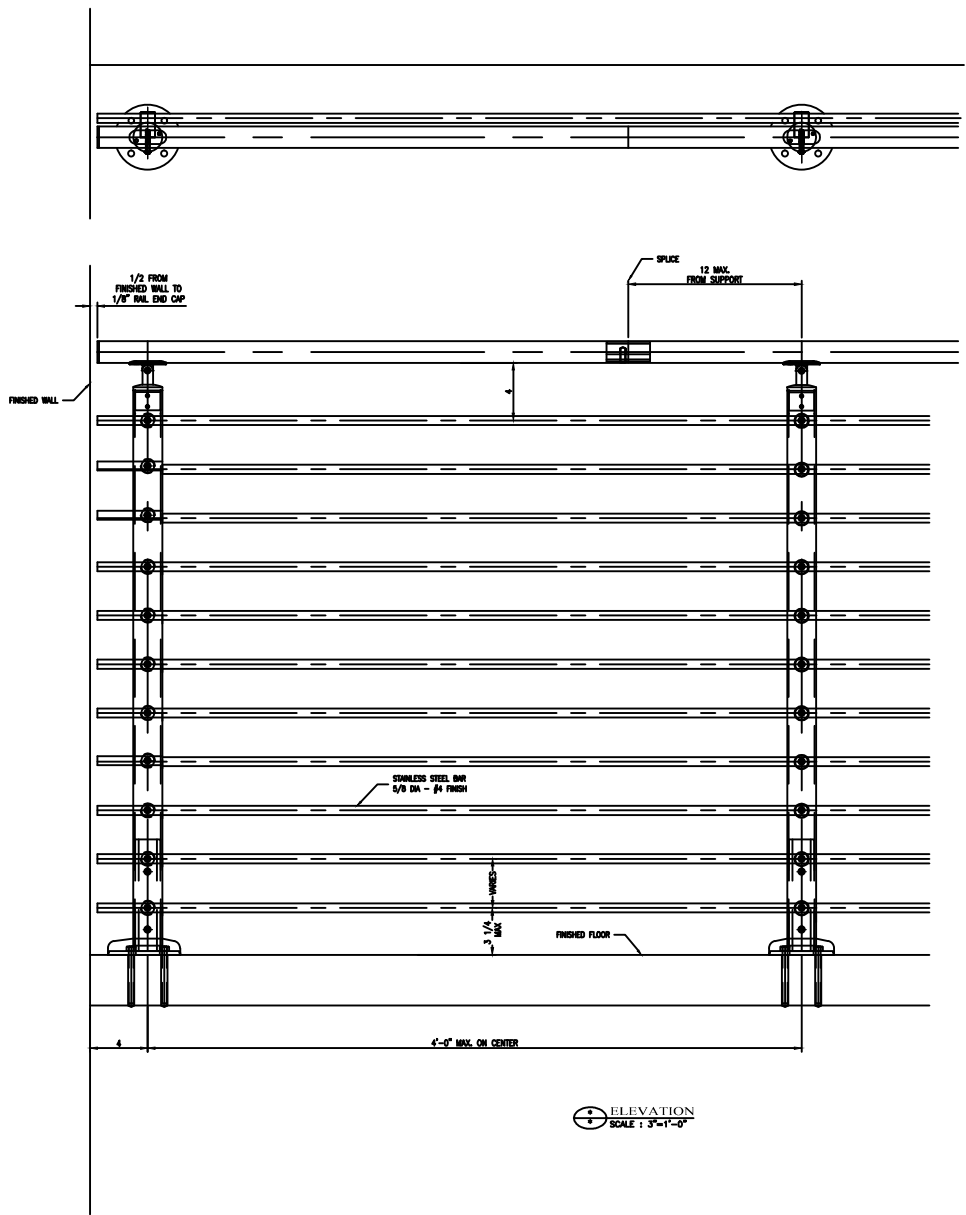


ELEVATION
SCALE 3/4"=1'-0"



SECTION
SCALE 3/4"=1'-0"

LIVERS BRONZE
 4000 15th Street, Suite 100, San Diego, CA 92161
 Phone: 619-444-2028 Fax: 619-444-2029
 www.liversbronze.com



RB1051-10 POST BRKT DETAIL

